

# Paraprofessional Training

## Paraprofessionals Footprints On Post School Predictors



Transition Improvement Grant



# Pre-Work

- **Reference Predictors Handout**
- **Complete Pre-Work**



Identify your responsibilities in your job and the tasks to complete those.

Respond to the prompt: What are the ways you work to allow your students to be independent.



# Contact Information

**Jennifer Hilgendorf**, Indicator 1 & 2 Coordinator

*(Statewide)*

N25 W 23121 Paul Rd., Suite 100

Pewaukee, WI 53072

Office: (626) 787-9500 x9545

Cell: (920) 609-7410

Email: [jhilgendorf@cesa1.k12.wi.us](mailto:jhilgendorf@cesa1.k12.wi.us)



**LaNae Jabas**, Central Regional Coordinator

*(supporting CESAs 5 & 6)*

626 E. Slifer Street

Portage, WI 53913

Office: (608) 745-5489

Cell: (608) 963-4799

Email: [jabasl@cesa5.org](mailto:jabasl@cesa5.org)



# The Post Secondary Transition Plan (PTP)

- The Plan for a student's future:

Is a part of the IEP starting at age 14

Updated at least once per year

Is a plan for the following:

- Student Post Secondary Goals: Education and Training, Employment, Independent Living

- Plan for Instruction for Students: Pre Employment Transition Services, IEP Goals, Classes a student will take

- Discussion about Graduation



PLAN

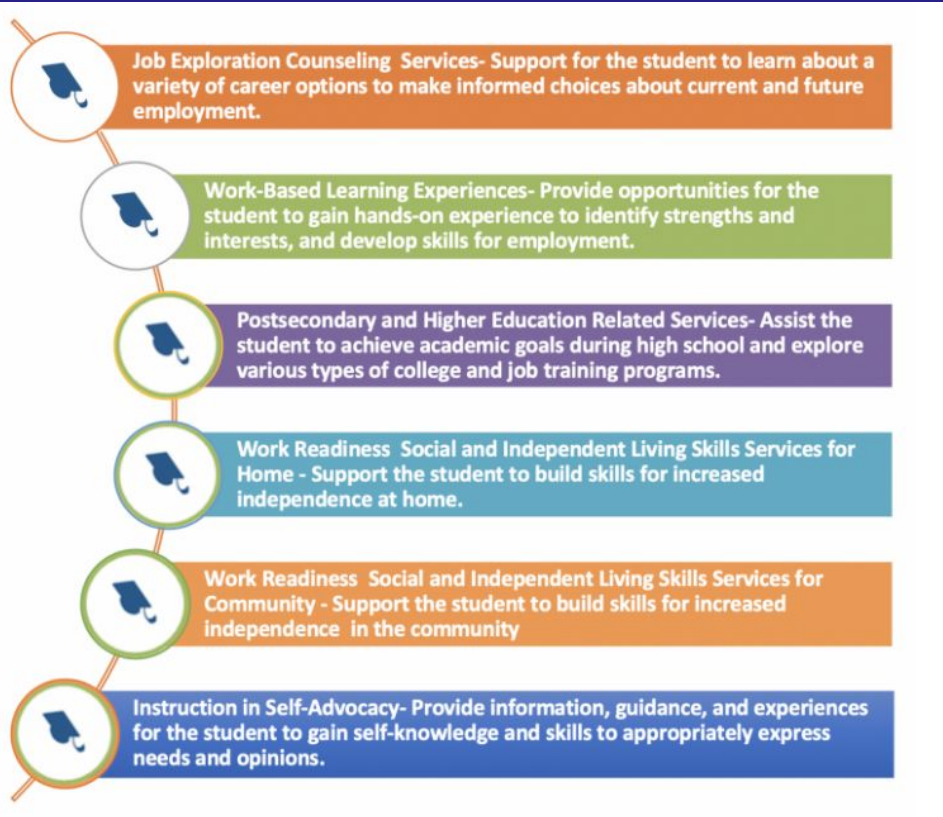
# Pre-Employment Transition Services (PrEts)

- Activities or services in the PTP
- In place to help the student meet their Post Secondary Goals
- 6 Categories for team to discuss
- At Least one service per year
- Benefit to multi year planning
- Exposure and opportunities for students

SERVICE



# Pre-ETS Categories and Descriptions



**Handout**



# In-School Predictors by Post-School Outcome Area



Need to Link

Predictors/Outcomes	Education	Employment	Independent Living
• Career Awareness	X	X	
• Community Experiences		X	
• Exit Exam Requirements/High School Diploma Status		X	
• Goal-Setting	X	X	
• Inclusion in General Education	X	X	X
• Interagency Collaboration	X	X	
• Occupational Courses	X	X	
• Paid Employment/Work Experience	X	X	X
• Parent Expectations	X	X	X
• Parental Involvement		X	
• Program of Study		X	
• Self-Advocacy/Self-Determination	X	X	
• Self-Care/Independent Living	X	X	X
• Social Skills	X	X	
• Student Support	X	X	X
• Transition Program	X	X	
• Travel Skills		X	
• Vocation Education	X	X	
• Work Study		X	
• Youth Autonomy/Decision-Making	X	X	

# Pre-ETS & Post School Outcome Predictors : Corrolation / Alignment

**Aligning Predictors of Post School Success with Pre-Employment Transition Services (Pre-ETS)**

**In-School Predictors by Post-School Outcome Area (NTACT)**

		Career Awareness	Community Experiences	Exit Exam Requirements / H's Diploma Status	Goal Setting	Inclusion in General Education	Intersagency Collaboration	Occupational Courses	Paid Employment / Work Experiences	Parent Expectations	Parental Involvement	Program of Study	Self-Advocacy / Self-determination	*Self-Care / Independent Living	Social Skills	Student Support	*Transition Program	Travel Skills	Vocational Education	Work Study	Youth Autonomy / Decision-Making
<b>Transition Services / Pre-Employment Transition Services (Pre-ETS) Outlined in the PTP</b>	Job Exploration Counseling Services	◆	◆	◆		▲	◆	▲	◆	◆	◆	◆		◆	◆	◆	▲	◆	▲	◆	◆
	Work-Based Learning Experiences	◆	◆			▲	◆	▲	▲	◆	◆	◆		◆	◆	▲		◆	▲	◆	
	Postsecondary and Higher Education Related Services	◆	◆	◆	▲	◆	▲	▲	◆	◆	◆	◆		◆	◆	▲		▲		◆	
	Work Readiness Social and Independent Living Skills for HOME		◆			▲	◆	▲	◆	◆	◆	◆	▲		◆	◆	▲				
	Work Readiness Social and Independent Living Skills for COMMUNITY		◆			▲	◆	▲	◆	◆	◆	◆	▲		◆	◆	▲		◆	▲	◆
	Instruction in Self-Advocacy	◆	◆	◆		▲	◆	▲	◆	◆	◆	◆	▲		◆	◆	▲		◆	▲	◆

▲ Research-Based Predictors of Positive Outcomes
◆ Promising Predictors of Positive Outcomes
◆ Education
◆ Employment
◆ Independent Living

This Resource for New Social Education Teachers: Predictors by Outcome Area, National Technical Assistance Center on Transition (NTACT)





# Case Studies and Reflect

- Review the mini case studies, identify which of these areas your support students with.



# Let's Hear from 6!

